

# Update on registration for Genetic Technologists


Training Officers meeting  
29.10.2018

Michelle Fenlon | WDC Co-Chair & AHCS  
assessor



# Academy for Healthcare Science (AHCS)

Aim is to reduce the risk of harm to patients by the Healthcare Science workforce who are not regulated by statute. They achieve this by maintaining voluntary and accredited registers

- Healthcare Science Practitioner Register 
- Higher Specialist Scientist Register
- Medical Illustrator Register
- Clinical Physiologist Register
- Consultation on proposed standards for Healthcare Science Assistants (July 17)
- ??Register Healthcare Science for Associates

# Healthcare Science Practitioner Register – Entry routes

1. Direct entry via an accredited Practitioner Training Programme (PTP)
2. Practitioner Equivalence
3. Certificate of Competence (CoC) for Genetic Technologists (GT)

# 1. Direct entry via an accredited Practitioner Training Programme

Options:

1. Register with the HCPC via IBMS as a Biomedical Scientist
2. Register with the AHCS as a Practitioner

Direct entry following successful completion of training – no need to apply for equivalence or CoC.

## 2. Practitioner Equivalence

- What is it?
  - A process that recognises educational qualifications, and accreditation of prior experiential learning
- How do I demonstrate it?
  - Provide evidence that you have the knowledge, skills and behaviours represented by the:
    - Core standards in Good Scientific Practice (GSP)
    - Standards of Proficiency for Practitioners
    - Learning outcomes of the relevant MSC curriculum.
  - This will be presented as a portfolio with evidence mapped to the standards
  - When an individual is assessed as meeting these criteria, they are issued with a Certificate of Equivalence
- The Certificate of Equivalence confers eligibility to apply for registration

# 3. Certificate of Competence for Genetic Technologists

- What is it?
  - A process that assesses competence against the relevant standards of proficiency and scope of practice, it recognises educational qualifications, and accreditation of prior experiential learning
- How do I demonstrate it?
  - Provide evidence that you have the knowledge, skills and behaviours represented by the:
    - Core standards in Good Scientific Practice (GSP)
    - Standards of Proficiency for Practitioners
    - The GT Scope of Practice
  - This is presented in the form of a written statement along with any relevant supporting documentation
  - When an individual is assessed as meeting these criteria, they are issued with a Certificate of competence
- The Certificate of Competence confers eligibility to apply for registration

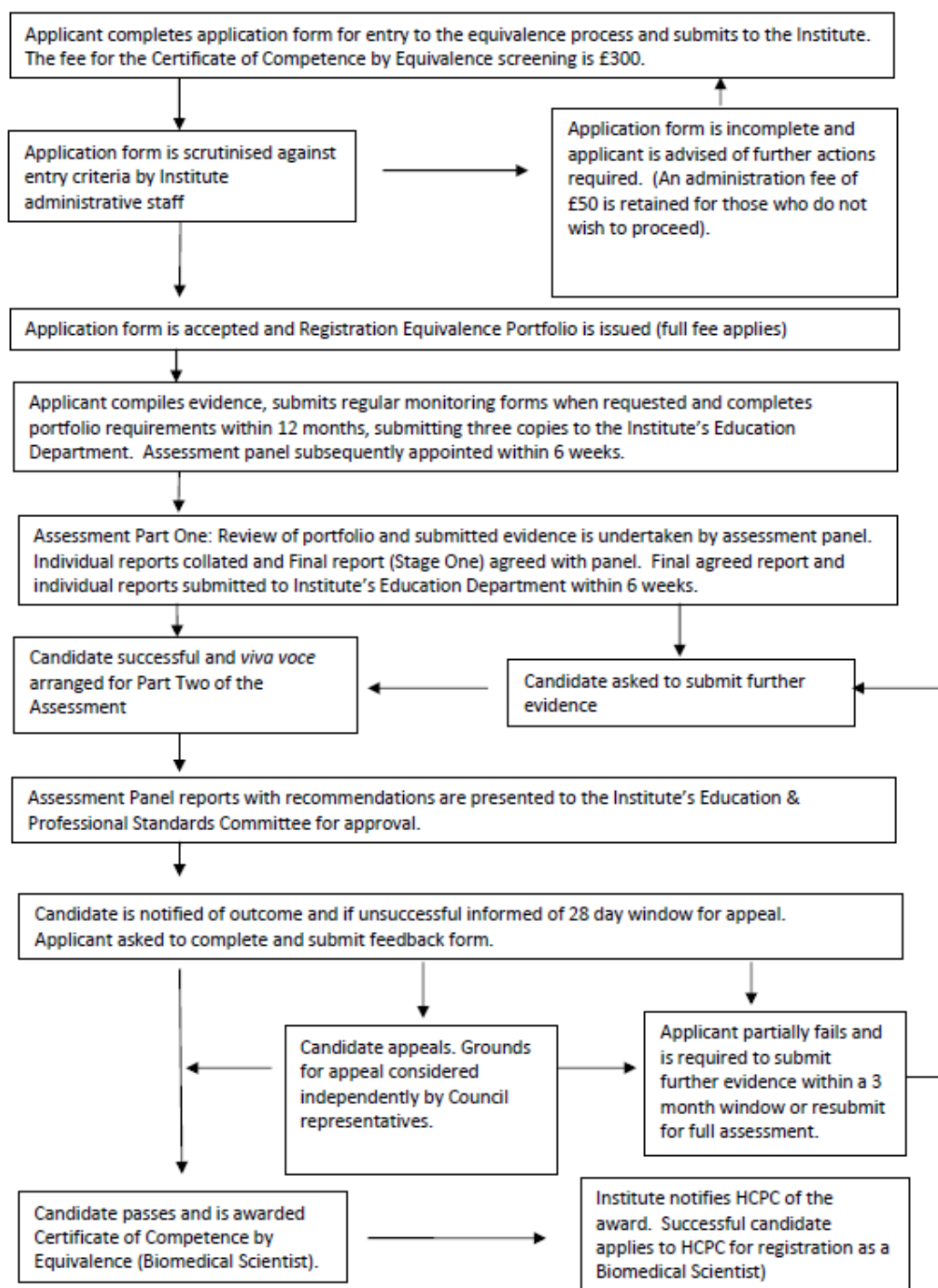
# Complex landscape – review ongoing

Training route	Registration route
Accredited PTP	AHCS (Practitioner) or HCPC (BMS)
Non PTP training	Certificate of Competence for Genetic Technologists Or Equivalence

On going work:

Review of application process for CoC

Revisiting the IBMS route for GTs



**Flow chart describing the process of obtaining a CERTIFICATE OF COMPETENCE BY EQUIVALENCE (BIOMEDICAL SCIENTIST)**



**Thoughts/questions?**